

# Winterface User's manual

[Introduction](#)

[Requirements](#)

[Activation](#)

[Start up](#)

[Managing your applications](#)

[Adding new applications/settings/contacts](#)

[Moving, renaming and deleting icons on the screen](#)

[View all running apps, switch between them and close](#)

[Customize the Winterface look](#)

[The Lock Screen](#)

[The Full Screen](#)

[Skin](#)

[Change background](#)

[Headings](#)

[Interface applets \(indicators\)](#)

[Weather application](#)

[Menu](#)

[Contact Us](#)

## Introduction

Winterface is the Next Generation Shell for Windows Mobile comprising the options of a launcher, a task manager, and multitude of Today plug-ins. Winterface virtually replaces default interface of touch screen Windows Mobile devices and gives the user unprecedented freedom to easily lay out interface exactly the way they like it.



## Requirements

Windows Mobile Classic (Pocket PC) 5.0/6.0/6.1

Windows Mobile Professional (Pocket PC Phone Edition) 5.0/6.0/6.1

## Activation

Downloadable version of Winterface is fully functional and has to be purchased and activated for further usage after 14-day trial period. Please purchase Winterface at <http://iwindowsmobile.com>

To activate:

connect your device to Internet

start Winterface

press **Menu** > **i (About)** > **Activate**

choose "I have Internet"

type in your activation code from the e-mail you received from VITO after purchasing Winterface and press **Activate now**.

In case you can't connect to Internet from your pocket PC, activation will take more time:

· start Winterface

· go **Menu** > **i (About)** > **Activate**

· press Activate button, type into the empty field the activation code from the email you received from VITO Technology after purchasing Winterface, choose "**I have no Internet**" and press Activate button below. The file "**send\_to\_support.txt**" was saved to "**\Program files\VITO\Winterface\License**" folder.

Please finish activation in the Support section <http://vitotechnology.com/en/support/>.  
On this page choose **off-line registration** in combo box to proceed with the off-line activation of your software.

To activate the program off-line make the following steps:

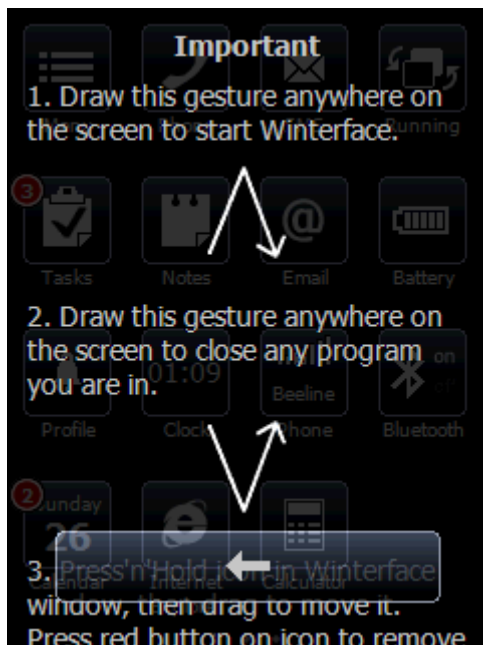
1. Press the button **Choose** and choose file **send\_to\_support.txt** that was created by the program
2. Having chosen the file press the button **Get License** and save the file with the license
3. Put the file with your license in the folder where there is the file **send\_to\_support.txt** is
4. Make sure that:  
the file with the license was named exactly as **license\_1.0.txt**  
the file is saved in Unicode format

*Note: as you can see on-line activation is much easier than the off-line variant, which can take considerably more time. We recommend you on-line activation.*

**The e-mails with activation codes are generated automatically, so if you didn't get the key, check your Spam Filters. Usually when you do not receive the key immediately the letter is put in junk.** If you have any questions or problems regarding the activation process, please contact our support at <http://vitotechnology.com/en/support/>.



## Start up



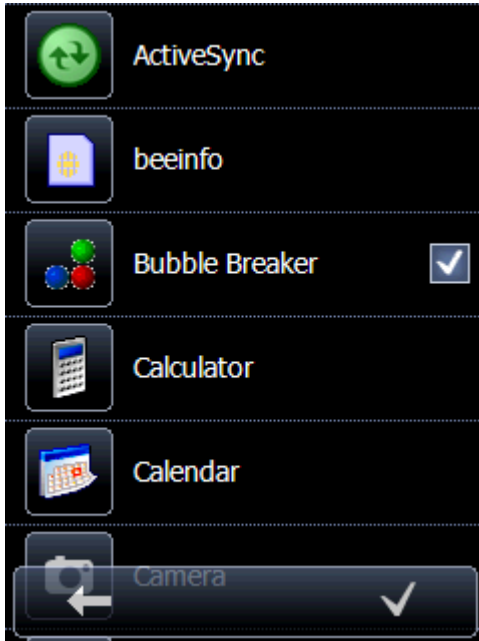
Winterface starts up with the help of the gesture ^ (see the screenshot).

Winterface lets you close any application you are in by drawing letter "V".



## Managing your applications

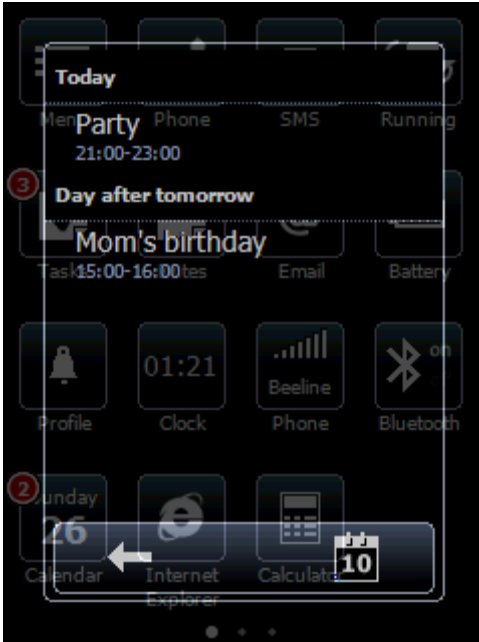
### *Adding new applications/settings/contacts/files/favorites*



To add new applications/settings/contacts or files to the main screen you need to tap **Menu** button and choose **Add**, then choose either **applications, settings, contacts, files or favorites**. After that there will appear a list of items, so tick the items you need and confirm by pressing the tick in the bottom right corner to add the chosen items. If you want to cancel the operation press the arrow in the bottom left.



By adding contacts you will have an immediate access to all important info about the contact and, for example, by tapping the phone number you will straight away dial the number, by tapping e-mail address you will write e-mail.



If you have appointments and events the applet Calendar will have red indicator with number, so by clicking it you may see all info on the semi-transparent window. If you need to edit the info you may go further and tap the icon in the bottom right or go backwards by pressing arrow.

### ***Moving and renaming icons on the screen***



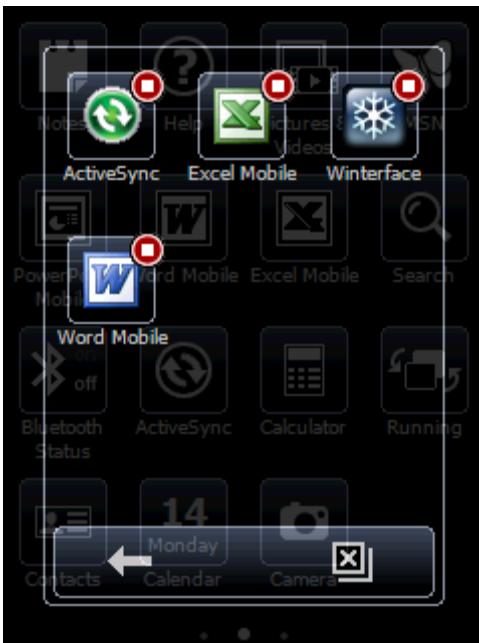
To move icons across the screen and organize the way you like, you need to tap and hold any icon on the screen to switch on **the edit mode**. When it is on tap an icon and drag it wherever you want organizing the working place in the order you like.

**To delete any icon** you are to press “exclamation mark” button when in edit mode and choose “delete”.

**To rename any icon** you are to press “exclamation mark” button when in edit mode and choose “rename”. Type the name you like and press “Ok”.

To switch off **the edit mode** press the central joystick button.

## ***View all running apps, switch between them and close***



To view or close any running apps, switch between them you should tap the icon **Running**. All apps that are running at the moment will be shown here.

To switch to the running application press the corresponding icon.

To close program press red button above the icon.

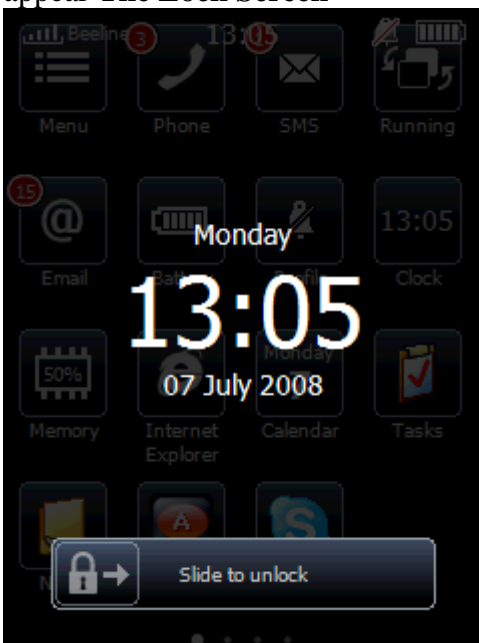
To close all running apps tap the icon with the cross in the right bottom corner of the screen.



## **Customize the Winterface look**

### ***The Lock Screen***

The screen can be locked by pressing power button, so that after you switch it on there will appear **The Lock Screen**



Slide the padlock to the right to unlock the screen and there appears the main window of Winterface.

There is also an option to disable Lock Screen, to do it go **Menu>Options>Lock Screen**.

### ***The Full Screen***

Winterface can be a full screen as well as non-full screen application with standard Windows Mobile "Start" panel.

To change the setting you should either put or remove the tick, go **Menu>Options>Full Screen**

## **Skin**

To change the skin download the one you like here:

[http://vitotechnology.com/winterface\\_skins.html](http://vitotechnology.com/winterface_skins.html) download the cab and install it on your device.

After having installed the skin you should go to **menu>options>skin**. The skin you installed will be in the list of skins.

## **Change background**

There are three types of skins:

1. The skins that can't change background (Dark and Bright).
2. The skins that can change the background color (Tile and Casino).
3. The skins that can change the whole background picture (The rest).

If the skin has the possibility to change background then you can go **Menu>Options>Background**

## **Headings**

To remove headings go **Menu>Options>Headings**.

To rename headings enter edit mode by pressing and holding any button on the screen. When in edit mode press "exclamation mark" button and choose "rename". Type the name you like and press "Ok".

To switch off **the edit mode** press the central joystick button.

## **Interface applets (indicators)**



Shows the number of missed calls



Shows the number of incoming messages



Shows the number of incoming e-mails



Shows the battery charge



Shows time



Shows percentage of occupied memory



Shows the date



Shows the ring profile



Shows the number of active tasks



Shows the number of coming events



Shows the phone carrier



Shows whether Bluetooth is on or off



Shows the weather forecast for the chosen city and starts weather application

## Weather application

Firstly, download cab file [here](#) install it on your device. If you want Weather application to appear in Winterface screen, start **Winterface>Menu>Applications> tick the Weather** application and press tick in the right bottom corner.



Start **Weather application**, type in the name of the city or choose it by scrolling the list of cities, tap the chosen one.

Once you've added the city it appears in the list.

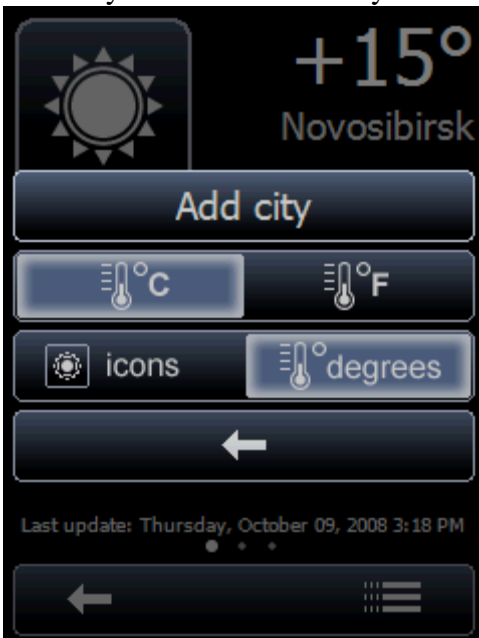
To delete it from the list, tap cross button beside the name of the city and then press delete.

To open Settings tap setting button in the bottom right corner:

To add new city, tap **Add city**> type in the name of the city, tap it

To choose between **Celsius** and **Fahrenheit**, tap the icon C (Celsius) or F (Fahrenheit)

You may also choose the way the weather is shown at you Winterface screen.



If you tap icons then Winterface weather icon will show weather images (images are changing according to the weather forecast).

If you tap degrees then Winterface weather icon will show degrees (Celsius or Fahrenheit).

Press **arrow** to go back to the Weather application.

The Winterface weather icon will always show the weather forecast for the first city that is on the list.

## Menu

To access Main Menu, tap **Menu** button in Main Window. There are the following options:

To add applications, tap **add** and then choose either

**Applications/Settings/Contacts/Files/Favorites**

To disable Lock Screen function, tap **options/Lock Screen**

To minimize program, tap **minimize button**

To exit, tap **cross button**

To open About, press icon **i (information)**

To return to Winterface, tap **cancel**

To change interface language, go **options/Language**

## Contact us

If you have any questions, comments or suggestions on Winterface, please contact us at

<http://vitotechnology.com/en/support/>.

