

AstroNavigator User Manual

Contents

[Introduction](#)

[Requirements](#)

[Start up](#)

[Activation](#)

[GPS Settings](#)

[Manual GPS Setup](#)

[Interface](#)

[Search of Celestial Bodies](#)

[Time Setup](#)

[Settings](#)

[Location](#)

[Main Menu](#)

[Contact Us](#)

Introduction

AstroNavigator is a GPS application that displays the sky map above you according to your current position, time and direction of movement. It is high time to break away from all the high-tech around and watch the night sky! With new AstroNavigator you can literally reach out and touch the sky. Just slide with a finger to rotate the screen and see a star, a planet, or a constellation. Tap one of them to read a wealth of information about any celestial body.

Requirements

Windows Mobile Classic (Pocket PC) 2003/5.0/6.0/6.1

Windows Mobile Professional (Pocket PC Phone Edition) 2003/5.0/6.0/6.1

Start up

Note: You will need a standard GPS receiver outputting NMEA sentences connected to your Pocket PC or a Pocket PC with built-in GPS receiver.

GPS option adds the following to the program:

The program will use the info from GPS receiver to set the exact time zone according to the geographic coordinates.

GPS option works only when the signal from the receiver is acquired.

Bluetooth GPS users should study Section on [Bluetooth GPS](#).



Activation

Downloadable version of AstroNavigator II is fully functional and has to be purchased and activated for further usage after 20 minutes trial period. Please purchase AstroNavigator at <http://iwindowsmobile.com>.

To activate:

- connect your device to Internet
- start **AstroNavigator**
- go **Menu > About>Activate**
- press **Activate** button, type into the empty field the activation code from the email you received from VITO Technology after purchasing **AstroNavigator**, choose “**I have Internet**” and press **Activate** button below.

In case you can't connect to Internet from your pocket PC, activation will take more time:

- start **AstroNavigator**
- go **Menu > About> Activate**
- press **Activate** button, type into the empty field the activation code from the email you received from VITO Technology after purchasing **AstroNavigator**, choose “**I have no Internet**” and press **Activate** button below. The file “**send_to_support.txt**” was saved to “**\Program files\VITO\AstroNavigator\License**” folder.

Please finish activation in the Support section <http://vitotechnology.com/en/support/>.

On this page choose **off-line registration** in combo box to proceed with the off-line activation of your software.

To activate the program off-line make the following steps:

1. Press the button **Choose** and choose file **send_to_support.txt** that was created by the program
2. Having chosen the file press the button **Get License** and save the file with the license
3. Put the file with your license in the folder where the file **send_to_support.txt** is
4. Make sure that:
 - the file with the license was named exactly as **license_1.0.txt**
 - the file is saved in Unicode format

Note: as you can see on-line activation is much easier than the off-line variant, which can take considerably more time. We recommend you on-line activation.

The e-mails with activation codes are generated automatically, so if you didn't get the key, check your Spam Filters. Usually when you do not receive the key immediately the letter is put in junk. If you have any questions or problems regarding the activation process, please contact our support at <http://vitotechnology.com/en/support/>.



GPS Settings

GPS on Windows Mobile 2003 PocketPC is not supported.

Built-in GPS

If you have a built-in GPS receiver the program establishes connection automatically. you may make GPS settings in the AstroNavigator. Start the program, choose **Settings>Location>GPS**. The program starts searching and it identifies the built-in GPS receiver.

BlueTooth GPS

To use AstroNavigator with Blue Tooth GPS you may need to make some additional steps before starting-up. Before starting the program, turn BT radio on.

Check that BT sees your GPS in BT Manager: **Start>program>comm Manager> switch on BT**

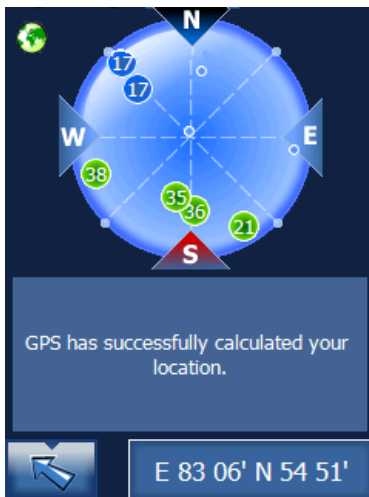
Then establish connection: **Start>settings>connections>BlueTooth>add new device (there should appear the name of your BT GPS Reciever)> Choose the name of your BT receiver>next>password (this password is given in the documentation of the reciever)> serial port (put a tick)>next**

Then create an outgoing port: **Start>Settings> connections>BlueTooth>ComPorts>New outgoing port> the name of your GPS receiver>next>put a tick in a box Secure connections>COM#>Finish**

If it still doesn't work set GPS program port, go **Start>Settings>System>External GPS>programs>COM# (the number of COM Port is different for each device, that's why you need to surf the Internet to find the number of COM Port that your device work at)**

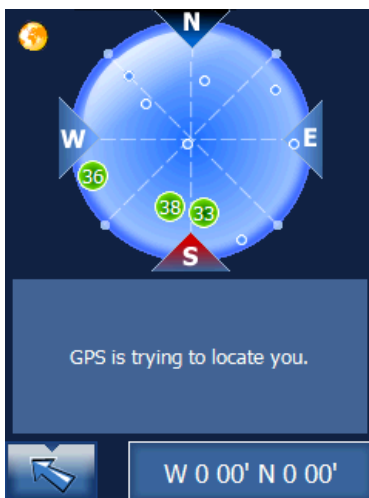
Set GPS hardware port, go **Start>Settings>System>External GPS>Hardware>COM# (the Port that you created) and baud rate.**

Having fulfilled all necessary steps, start program **AstroNavigator>Settings>Location>GPS.**

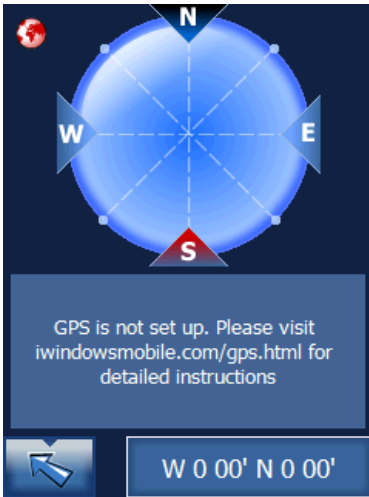


If the GPS receiver works fine, on the top left of your screen the icon with the globe image will become green. There will also appear satellites from which your GPS receiver gets signals. If the signal from the satellite is strong enough its color will be green. If it is not, it will be blue.

The figures inside circles denote signal strength of each satellite measured in decibel.



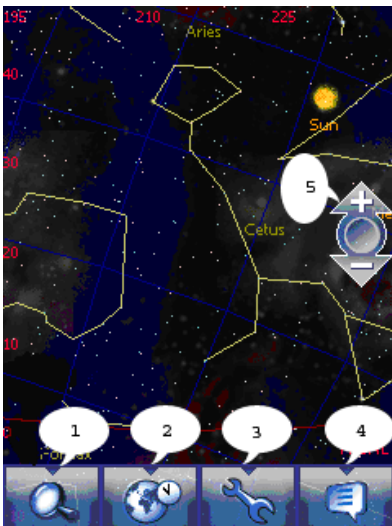
If the globe icon is yellow, then the connection with the GPS exists but it does not determine valid coordinates



If the globe icon is red, the connection with the GPS has failed.

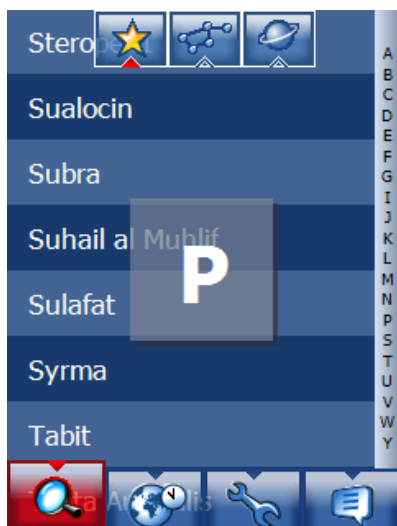


Interface



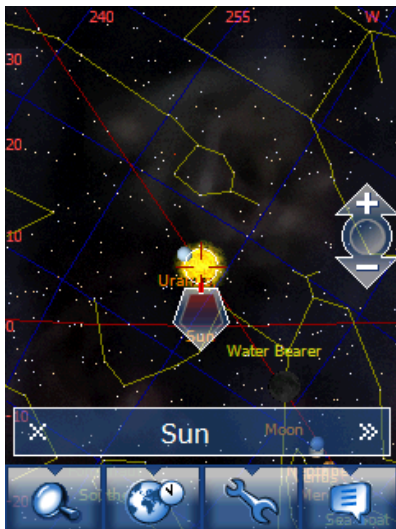
1. Search
2. Time setup
3. Settings
4. Main Menu
5. Zoom in and out

Search of Celestial Bodies

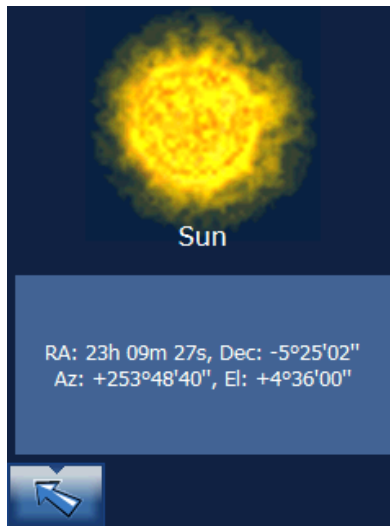


Tap the button **Search**. The extensive list with the names of celestial bodies is displayed on the screen.

On the top of the screen there appear three icons with the images of a star, planet and constellation. Choose what celestial body you want to find. Slide the letters aside the screen and choose the one the name of a star starts with. Tapping an icon brings forward a list of corresponding celestial bodies (stars, planets or constellations). Scroll the list with your finger and then tap on an item to see its disposition in the sky. For quicker scrolling press the letters on the right.



Screenshot #6



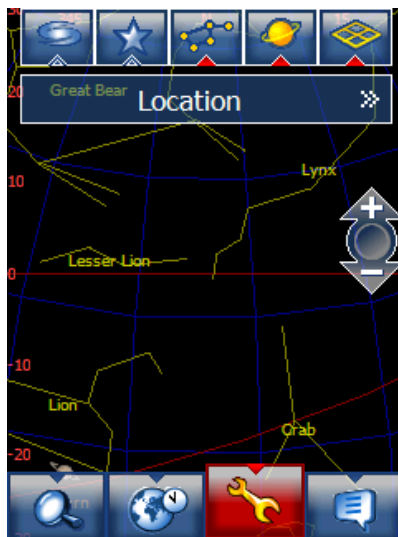
Having chosen the celestial body tap it and it will be shown on the star map. There will be also an arrow with its name, tap and see its image, read astrological info about it.

Time Setup



Tap the button **Time setup**. It is possible to set up any time you want. When you set not current time there appears button “Now” and exclamation mark for you to be aware that you set a different time. If you want a current time to be back, tap “Now” button.

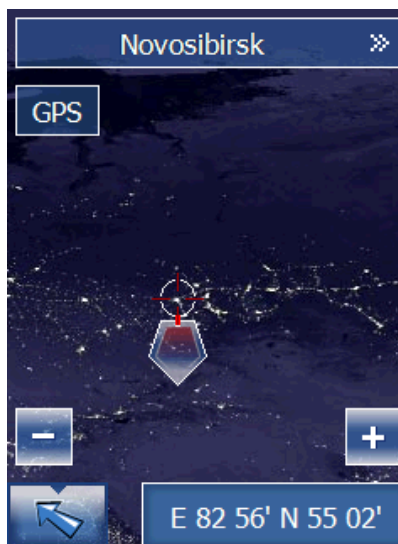
Settings



Tap the button **Settings**.

Here you may add or remove the displaying of stars, planets, constellations, grid and nebulas by tapping icons with the corresponding images. This option makes celestial bodies and a grid either visible or invisible.

Location

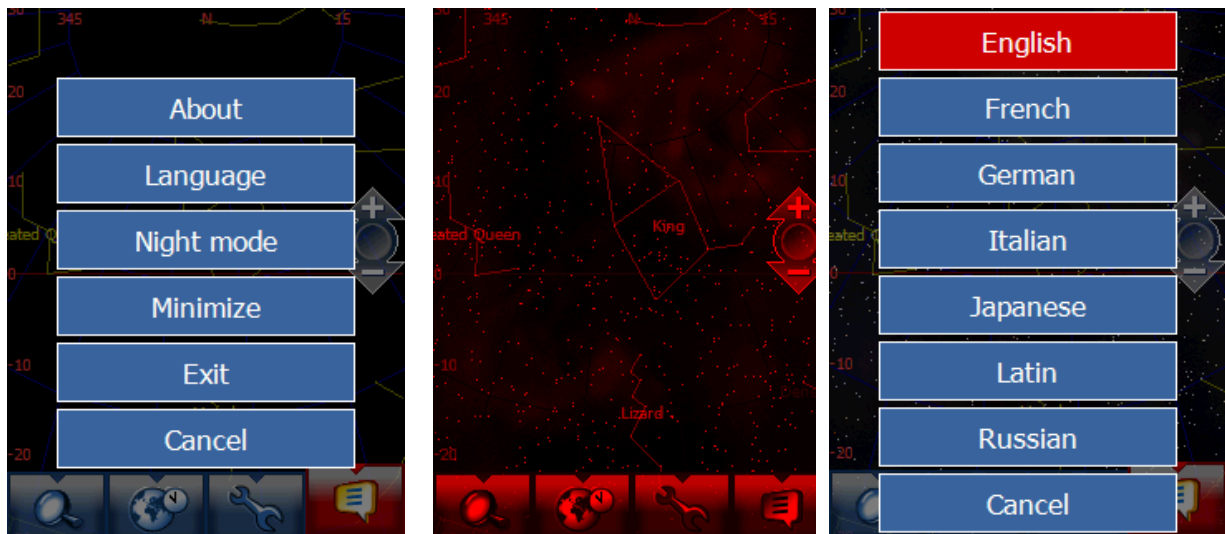


Tap the button **Location**, either to observe stars that are currently above you, or to observe the star sky from any point of the world. To set up GPS study the [section](#).

Another opportunity to choose the location is to zoom in the map of the Earth and with the help of the cursor choose the town or place where you are or where you'd like to find yourself.

The most easy way to find the town is to press the upper onscreen button and move to the list of towns. There with T9 search you can find almost any town just in few seconds.

Main Menu



Bringing forward **Main Menu** gives you the following options:

About

Language

Night mode

Minimize

Exit

You may choose between 7 available languages.

There are two skins: normal and night view. Night view skin (screenshot #10) displays night sky in dim red colors that doesn't dazzle you and you clearly watch the stars above you.



Contact Us

If you have any questions, comments or suggestions on AstroNavigator, please contact us at <http://vitotechnology.com/en/support/>.